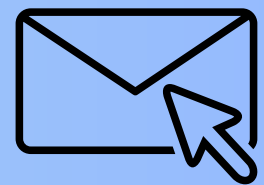


June 2024



Monthly Newsletter



WHAT'S NEW FROM THE IPAC HUB

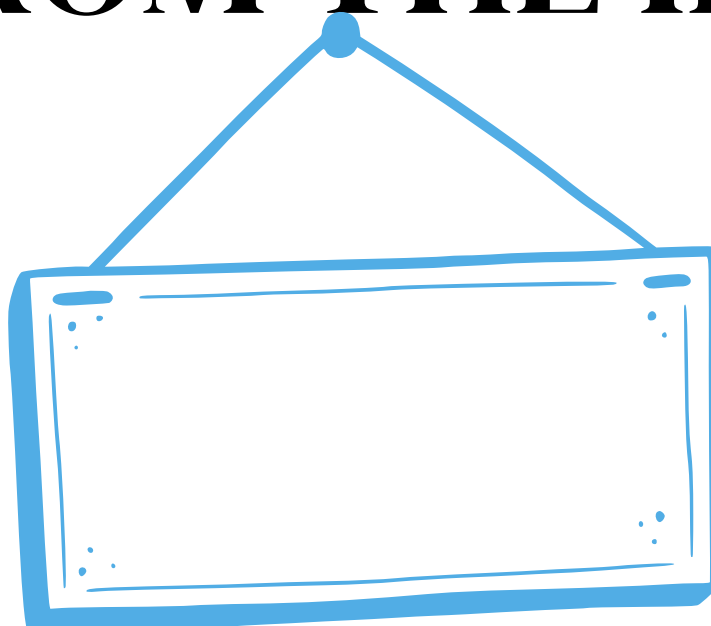


Website Launch

Link: [IPAC Hub Website](#)

On the HUB website, Congregate settings can find various resources.

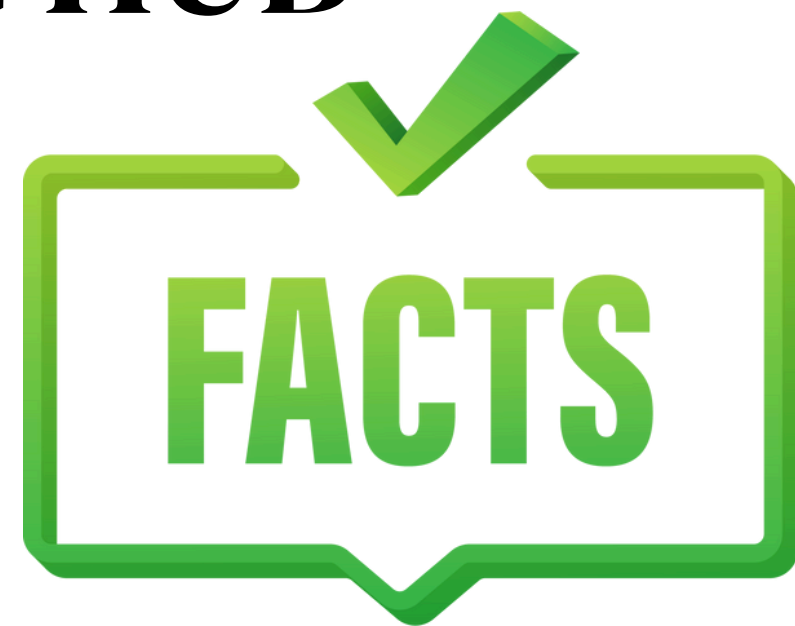
Please click the link and explore!



Signage (Hub Website)

- How to mask
- Passive screening
- Mask Friendly

More to come!



Fact Sheets (Hub Website)

- Cleaning Vs. Disinfection
- Bleach disinfection
- Point-of-care risk assessment
- Selection of PPE based on point-of care risk assessment

More to come!

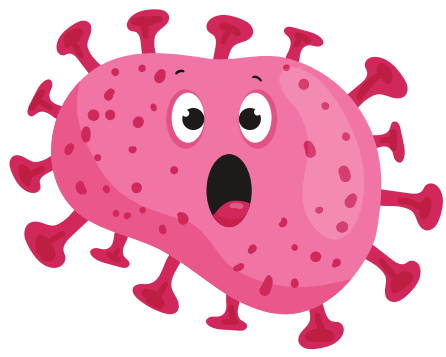
ENVIRONMENTAL CLEANING REMINDERS



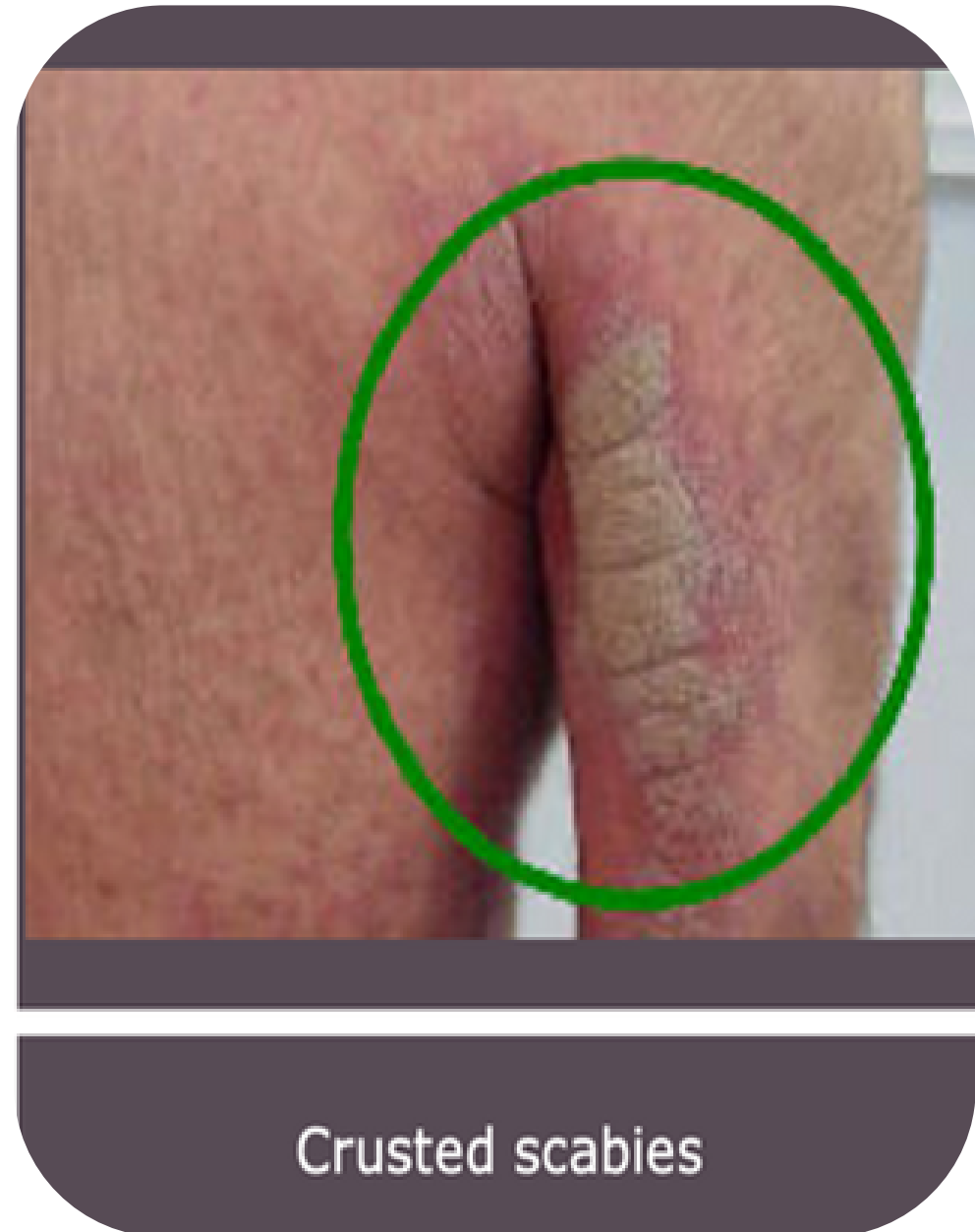
When using Disinfecting Wipes:

- Use Health Canada-approved wipes with a DIN number
- The active ingredient must be an appropriate hospital disinfectant
- Always follow manufacturer's instructions
- Always seal the lid of the container to keep the wipes wet. If wipes dry out, do not use!
- Follow the contact time for proper disinfection
- Check expiration date on container!
- Wipes must have a safety data sheet and be used according to the safety data sheet (e.g., wear gloves when handling, if recommended)

BUG OF THE MONTH SCABIES



Typical scabies lesions on the skin



Crusted scabies

WHAT IS IT?

- A parasitic infestation caused by *Sarcoptes Scabiei*, tiny mites that burrow into the skin and lay eggs
- One of the most common dermatological conditions
- Two types: Classic 'typical' and Crusted 'Norwegian' scabies
- Symptoms usually begin within 4-6 weeks after infestation

SIGNS AND SYMPTOMS

Classic 'Typical' Scabies

- Severe itch, often worse at night
- Itchy blisters or bumps (rash) on the body; typically on the hands (web space between the fingers), wrists, chest, genital area and waistline
- Inflamed bumps on male genitalia and female breasts



DID YOU KNOW??



- Scabies can lead to skin sores and serious complications like septicemia (a bloodstream infection), heart disease, and kidney problems
- Risk of transmission increases with the level of infestation, with highest risk due to contact with individuals with crusted scabies
- Scabies mites will die if exposed to high temperature (50°C /122°F for 10 minutes). Launder all bed linen and clothing using a hot cycle wash and a hot drying cycle

- **Common 'Typical' Scabies:** Most people are infected with 10-15 mites
- **Crusted 'Norwegian' Scabies:** More severe form of Scabies, more likely to be developed in Immunocompromised individuals
 - Can have thousands or millions of mites and can be life threatening
 - Causes dry, scaly areas on the skin and often does not cause an itch

TRANSMISSION

- Person-to-person through close, prolonged direct/skin contact (e.g. living in the same residence) with an infested individual
- Scabies can also spread by sharing clothes, linen/bed sheets and towels.
 - Scabies mites can live on clothing or other objects for 2-3 days.
- Transmission may occur before symptoms appear

IPAC CONSIDERATIONS

- Seal items that can't be washed in a plastic bag for a week

Precautions

- Common 'typical' – routine precautions, gloves for skin contact.
- Crusted 'Norwegian scabies' – contact precautions. Single room recommended
- Continue precautions until 24 hours after application of scabicide or return to work 24 hours after treatment is complete



FEEDBACK SURVEY

Please scan the QR code with your cell phone camera and provide the IPAC Hub with feedback and topic suggestions. Thank you!

[Survey Link](#)

REFERENCES

PIDAC: Best practices for environmental cleaning for prevention and control of infections in all health care settings (2018, April).

Public Health Ontario. (n.d.). Clinical syndromes/conditions with required level or precautions.

Scabies. Halton Region. (n.d.).

World Health Organization. (2023, May 31). Scabies.

RESOURCES

Environmental Cleaning:

[PIDAC: Best Practices for Environmental Cleaning for Prevention and Control of Infections in All Health Care Settings](#)

SCABIES :

[Halton Region: Scabies](#)

[PHO: Clinical Syndromes/Conditions with Required Level of Precautions](#)

[World Health Organization: Scabies](#)