

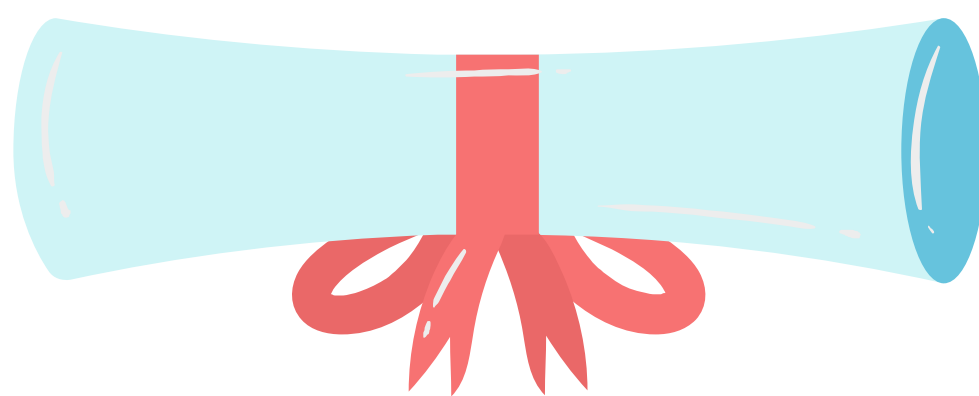


# Monthly Newsletter



## WHAT'S NEW FROM THE IPAC HUB

**LET'S CELEBRATE**



### Keep an Eye Out

Celebrate **IPAC week** with us **Oct 14th-18th!**  
Daily e-mails, fun activities, and prizes!

### Congratulations!

Please join us in congratulating fellow Halton IPAC Hub member, **Shaniece Dodds**, for passing the CIC exam!

### \*NEW\*

- Cough Etiquette Signage
  - Additional Precautions & Blood Borne Infections Fact Sheet
  - IPAC Essentials
  - PHO Donning/Doffing Resource Poster
- [www.haltonipachub.com](http://www.haltonipachub.com)

## FALL OUTBREAK PREPAREDNESS FROM HALTON PUBLIC HEALTH

As the fall approaches all congregate living settings are recommended to review their Outbreak Preparedness Plan. LTC and RHs Homes can do so by completing the [IPAC Self-Assessment Audit for Long-Term Care and Retirement Homes Published: September 2023](#). These Principals can be adapted to **any setting** and include:

- Hand Hygiene and Personal Protective Equipment (PPE) Compliance
- Staff Training
- Point of Care Risk Assessment (PCRA), PPE use, Hand Hygiene and Environmental Cleaning
- Passive and Active Screening Practices
- Staffing Surge Capacity Plan
- Visitors Policy
- Proper Ventilation and Filtration

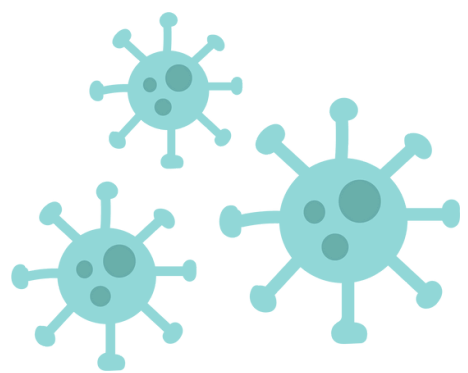
- Environmental Cleaning and Disinfection Strategies
- Adequate level of trained staff on site to implement outbreak control measures
- Adequate supply of unexpired nasopharyngeal swabs (NPS) on hand with appropriate media and unexpired COVID-19 Rapid Antigen Tests



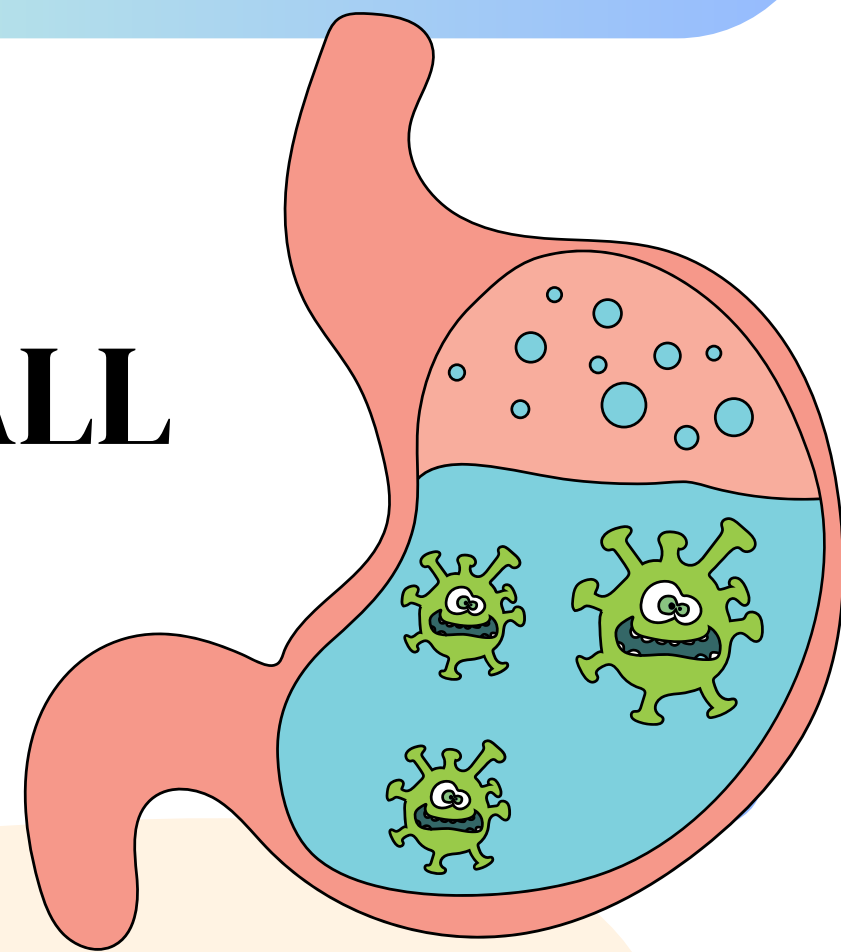
# INFLUENZA FALL OUTBREAK PREPAREDNESS FOR LTC AND RH

- Recent creatinine clearance levels on file for residents with known renal impairment
- To be on file in advance of the respiratory virus season and done on admission for new residents
- Pre-arranged physician antiviral orders for resident prophylaxis/treatment
- Ensure health care providers and pharmacy can be reached rapidly (including on weekends and holidays)

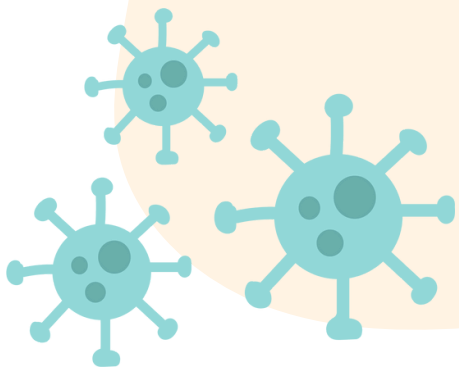
- Treatment is most effective when started within 48 hours of symptom onset
- Prophylaxis should begin within 24 hours of a lab-confirmed influenza outbreak to stop the progression of the outbreak
- Exclusion policy in place for unimmunized staff who refuse or are unable to take antiviral medication



## ENTERIC OUTBREAK FALL PREPAREDNESS



- Conducting active surveillance to identify residents that have diarrhea, vomiting and/or nausea that is unexplained by other factors such as diet, laxatives, medication or other health conditions and monitoring
- Prompt identification and isolation of symptomatic residents
- Ill staff must perform hand hygiene and go home if at work. Ill staff should not return until 48 hours have passed since their last bout of vomiting, diarrhea, and/or nausea
- Reporting to Public Health as soon as an enteric outbreak is suspected
- Enhanced Environmental Cleaning and Disinfection
  - Disinfect surfaces and equipment with a hard surface disinfectant that will kill the identified/suspected pathogen (e.g., norovirus)
  - Ensure your disinfectant has a reasonable contact time and is compatible with the surface to be disinfected



**Contact Halton IPAC Hub to book  
your Fall Preparedness IPAC  
Assessment!**



# FEEDBACK SURVEY

Please scan the QR code with your cell phone camera, or click the link below and provide the IPAC Hub with feedback and topic suggestions. Thank you!

[Survey Link](#)

## RESOURCES

### Ministry for Seniors and Accessibility

- [COVID-19 guidance document for retirement homes in Ontario](#)

### Ministry of Health

- [ID Protocol Appendix 1: Coronavirus Disease 2019 \(COVID-19\)](#)
- [ID Protocol Appendix 1: Respiratory Infection Outbreaks in Institutions and Public Hospitals](#)
- [Recommendations for Outbreak Prevention and Control in Institutions and Congregate Living Settings](#)

### Provincial Infectious Diseases Advisory Committee

- [Routine Practices and Additional Precautions in All Health Care Settings, 3rd edition](#)

### Public Health Ontario

- [Antiviral Medications for the 2023-24 Seasonal Influenza: Public Health Considerations](#)
- [Cohorting in Respiratory Virus Outbreaks](#)
- [Prevention and Management of COVID-19 in Long-Term Care and Retirement Homes](#)
- [Respiratory Outbreak Testing Prioritization Protocol](#)
- [Respiratory Virus Outbreaks Considerations for Public Health Planning](#)
- [Test Information Index for Respiratory Viruses \(including influenza\)](#)