

Chain of Infection

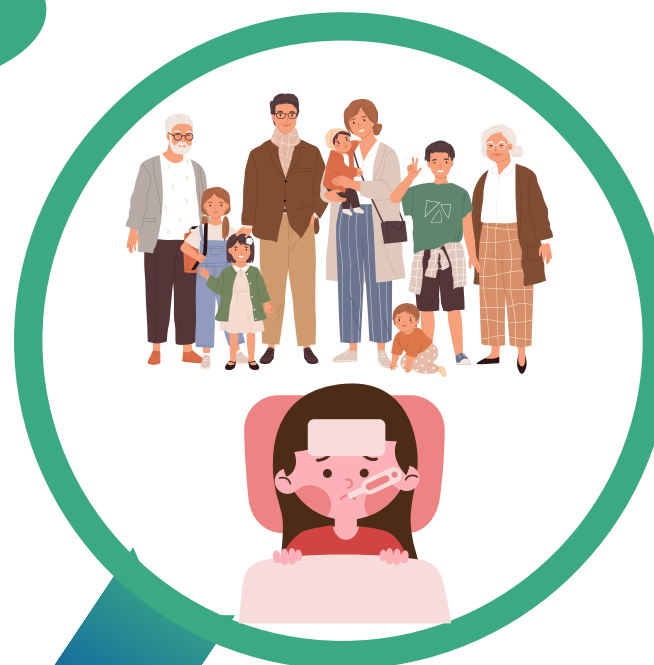
The **chain of infection** explains how an illness spreads from one person to another.

It's like a series of links in a chain – if you break just one link, you can stop the illness from spreading!

Next Sick Person

(Susceptible Host)

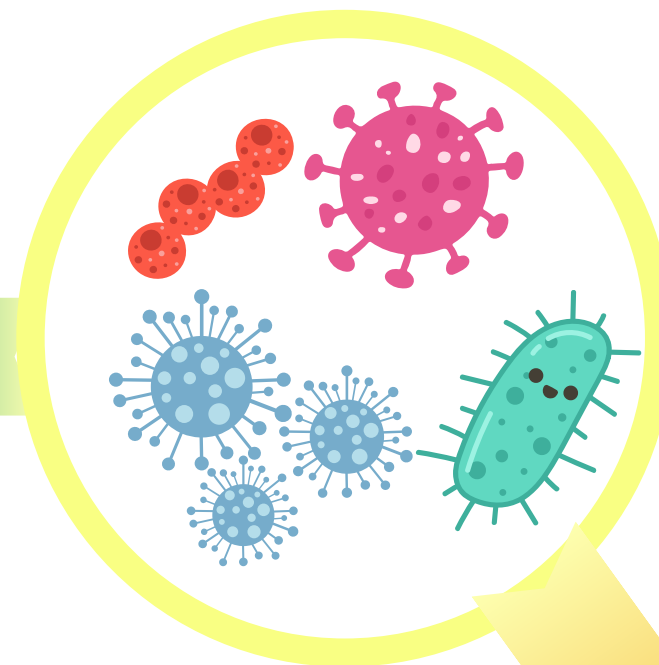
- People with weak immune systems
- Elderly
- Babies
- Children
- ANYONE!



Germ

(Agent)

- Viruses
- Bacteria
- Fungus
- Parasites



Where Germs Live

(Reservoir)

- People
- Animals/Pets
- Soil
- Water
- Food
- Inanimate Objects (Ex. doorknobs)

How Germs Get In

(Portal of Entry)

- Mouth
- Nose
- Eyes
- Cuts in skin



Germ Get Around

(Mode of Transmission)

- Contact (Hands, objects - keyboards, doorknobs etc.)
- Droplet (When you speak, cough, or sneeze)
- Airborne (Through the air)



How Germ Get Out

(Portal of Exit)

- Cough
- Sneeze
- Cuts in the skin
- Vomit
- Feces

Adapted from: Ottawa Public Health

Reference:

Ottawa Public Health. (n.d.). Chain of infection. Ottawa Public Health.
<https://www.ottawapublichealth.ca/en/professionals-and-partners/chain-of-infection.aspx>